

06 NIGHTS / 07 DAYS

SIGIRIYA/ POLONNARUWA/ ANURADHAPURA/ BENTOTA/ COLOMBO

Tour Itinerary

ABOUT SRI LANKA

Sri Lanka is a lush, tropical island paradise, known to Arab traders as Serendib – hence "serendipity", meaning discovery by happy accident. Set in the Indian Ocean in South Asia, the tropical island nation of Sri Lanka has a history dating back to the birth of time. It is a place where the original soul of Buddhism still flourishes and where nature's beauty remains abundant and un-spoilt. There are 8 world Heritage sites in Sri Lanka. The 3 ancient and magnificent cities of Anuradhapura, Polonnaruwa and Sigiriya were inscribed in the UNESCO World Heritage list in 1982 followed by Galle, Kandy, and the Sinharaja Forest Reserve in 1988. The Golden Temple of Dambulla in 1991 and finally the Central highlands were added in 2010. These places of historical and natural significance are not to be missed for any visitor to Sri Lanka. Being an ancient kingdom, Sri Lanka has preserved its most precious treasures, its culture and tradition. An integral part of this is its cuisine. Sri Lankan cuisine has many influences from varied destinations such as North and South India, Persia, Malaysia, Holland, and Portugal. Rice, which is usually consumed daily, can be

found at any special occasion, while spicy curries are a favorite dish for lunch and dinner. Fish curry is a particular specialty. Having a history marked by four centuries of colonial rule, all three in such proximity. Sri Lanka is ranked amongst the world's best biodiversity hot spots. As a country with a high rate of endemism, it has many groups of animals including birds, mammal, reptiles, and amphibians which cannot be found anywhere in the world. With over 12 per cent of the country designated for wildlife country still manages to safeguard remnants from the past in their original grandeur. Some of the more renowned historic sites are the Galle Fort built originally by the Portuguese, Colombo Harbor, and the ancient city of Polonnaruwa all confirm Sri Lanka's ancient and colorful past. The rock temple of the Buddha, Gal Vihara is one of the finest examples of the religious heritage. Temples play an important part in everyday life and a visit to one should be a must for all visitors. Sri Lanka's wildlife is as varied as the island itself, ranging from elephants and leopards to Whales – it is the only place in the world to find.



06 NIGHTS / 07 DAYS

SIGIRIYA/ POLONNARUWA/ ANURAHAPURA/ BENTOTA/ COLOMBO

DAY 01 - AIRPORT / SIGIRIYA

“Ayubowan” On arrival at the International Airport, you will be blessed to get your first taste of warm Sri Lankan hospitality; Representative or the guide from Exciting Travel Holidays will welcome you at the Airport & transfer clients to Sigiriya.....

(Approximately 4 hrs. journey (150km) from Airport to Sigiriya)

Proceed to Sigiriya via Pinnawala

On the way visit Pinnawala Elephant Orphanage.

Pinnawala Elephant Orphanage – set amongst the verdant hills of Kegalle is a unique orphanage, where the tiny tots weigh 60 kg or more. This is the Pinnawala Elephant Orphanage, the world's first and only elephant orphanage established to feed, nurse and house young elephants lost or abandoned by their mothers. Other occupants are elephants displaced from their natural environs by development projects or those found wounded. Visitors could see the baby elephants being fed milk from gigantic feeding bottles or bathed in the river which flows nearby – an unforgettable sight! Established in 1975, by the Wildlife Department and National Zoological gardens which subsequently led to a breeding programme through which more than twenty-five elephants have been born since 1984.



Proceed to Sigiriya

Evening relaxes at the hotel.

Dinner and overnight stay at Sigiriya.

DAY 02 - SIGIRIYA / POLONNARUWA / SIGIRIYA

Breakfast at the hotel.

Proceed to Polonnaruwa

(Approximately 1 ½ hrs. journey (60 km) from Sigiriya to Polonnaruwa)

City tour at Polonnaruwa

Visit Polonnaruwa ancient city

Polonnaruwa is another “World Heritage Site” was the Capital of Sri Lanka from 11th - 13th Centuries, contains some splendid and spectacular statues. Lankatilake, Tivanka and Thuparama are the most beautiful and largest Image Houses and Tivanka has the best examples of frescoes of the Polonnaruwa period. Rankoth Vehera and Kirivehera are well preserved large stupas, and Gal Vihare - a rock shrine, has four Buddha statues, two seated, one standing and one reclining and Parakrama Bahu statue are examples of Sinhalese stone carver. The Vata-da-ge is a unique creation of the Sri Lankan artists. The medieval capital, Polonnaruwa was fortified with inner & outer moats and inner & outer walls. The Parakrama Samudra is on the western side of the city. The Royal Palace, Audience Hall and other buildings in the inner city were enclosed by another tall wall.



Later afternoons proceed for a jeep safari at Minneriya National Park

MINNERIYA NATIONAL PARK - sitting in the centre of the cultural triangle, Minneriya is a good alternative to the busier parks in the south and it's easy to weave in a day here between visiting the ancient cities. The dry season, preferably from June to September, is the best time to visit the 8,890 hectare park when the ancient tank, the lake that dominates the area, dries out and the grasses and shoots push through. During this time it is possible to see herds of up to 150 elephants feeding and washing, as well as toque macaques, sambar deer and leopards. The hungry bird flocks include cormorants and painted storks. Minneriya, closest by car to the ancient city Polonnaruwa, was upgraded from a nature reserve to a national park because of the increased number of tourists coming to see the elephants.



Proceed again to Sigiriya

Dinner and overnight stay at Sigiriya

DAY 03 - SIGIRIYA / ANURADHAPURA / SIGIRIYA

Breakfast at the hotel

Proceed to Anuradhapura

(Approximately 1 ½ hrs. journey (70 km) from Sigiriya to Anuradhapura)

City tour at Anuradhapura

Anuradhapura is a great monastic city of ancient world. From 5th Century BC till 11th Century AD it was capital of the Kingdom of Sri Lanka. Today Anuradhapura, a UNESCO World Heritage Site, is replete with renovated monuments, restored edifices, preserved ruins and historical sites. Visit to the following tourist attraction are included in this tour: the Ruwanvelisaya, Thuparamaya, Abhayagiriya Monastery, Samadhi Buddha Statue, Kuttam Pokuna, Jethawanaramaya Dagaba, Isurumuniya and Sri Maha Bodhiya.



Proceed back to Sigiriya again.

Evening relaxes at the hotel

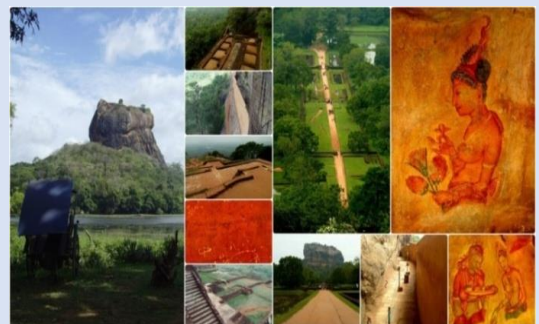
Dinner and overnight stay at Sigiriya.

DAY 04 - SIGIRIYA / KANDY

Breakfast at the hotel

Start the journey to climb the Sigiriya “Lion Rock”

In 477 CE, Kashyapa, the king's son by a non-royal consort, seized the throne from King Datusena, following a coup assisted by Migara, the King's nephew and army commander. The rightful heir, Moggallana, fearing for his life, fled to South India. Afraid of an attack by Moggallana, Kashyapa moved the capital and his residence from the traditional capital of Anuradhapura to the more secure Sigiriya. During King Kashyapa's reign (477 to 495 CE), Sigiriya was developed into a complex city and fortress. Most of the elaborate constructions on the rock summit and around it, including defensive structures, palaces, and gardens, date from this period.



After proceed to Kandy.

(Approximately 2 hrs. journey (80 km) from Sigiriya to Kandy)

Later afternoons visit Kandy Temple of the Tooth Relic

DALADA MALIGAWA or the Temple of the sacred Tooth Relic in Kandy is the most venerated place of worship for Buddhists throughout the world. Built in the 16th century this temple houses the sacred Tooth Relic of the Buddha brought to Sri Lanka from the Kalinga province in ancient India in the 4th century AD. Several buildings have been added to the temple complex by successive rulers, the latest being the Golden Canopy over the inner shrine where the Tooth Relic is placed. Originally the Temple was within the King's palace complex as it was the symbol of Royal Authority.



Dinner and overnight stay at Kandy.

DAY 05 - KANDY / BENTOTA

Breakfast at the hotel.

After visit Peradeniya Botanical garden.

ROYAL BOTANICAL GARDENS - at Peradeniya (109 km. from Colombo) near Kandy was laid out in 1821 by the British colonial rulers. Prior to that it was the Royal Pleasure Garden of the Kandyan Kings. It is in a beautiful setting with the longest river of Sri Lanka, Mahaveli bordering on one side. This attractively laid out garden displays many varieties of floral and green plants. Special features are the Orchid House which displays a fine collection of Sri Lankan orchids, the fernery, spice garden, and the trees planted by distinguished visitors to the Island.



Later afternoons proceed to Bentota.

(Approximately 4 hrs. journey (180km) from Kandy to Bentota)

Evening relaxes at the hotel

Dinner and overnight stay at Bentota

DAY 06 – BENTOTA / COLOMBO

Breakfast at the hotel

Proceed to Colombo.

(Approximately 1 ½ hrs journey (60 km) from Bentota to Colombo)

Leave for city tour at Colombo

Colombo was probably known to Roman, Arab, and Chinese traders more than 2,000 years ago. Muslims settled there in the 8th century and controlled much of the trade between Sinhalese kingdoms and the outside world. The Portuguese arrived in the 16th century and built a fort to protect their spice trade. The Dutch captured the city in the 17th century. The British made the city the capital of their crown colony of Ceylon in 1802



Sightseeing highlights include the

Colombo National and Dutch period museums, old and new parliament houses, Gangarama Buddhist Temple, Town Hall, and the Bandaranaike Memorial International Conference Hall. Apart from excellent shopping, Colombo offers visits to one of the world's leading tea auctions, an 18-hole Golf Course, seasonal Buddhist and Hindu pageants, international cricket tournaments, plush casinos, enjoyable evening entertainment and excellent restaurants. State-of-the-Art communications and Cyber services are available in the hotels and other outlets.



Dinner and overnight stay at Colombo

DAY 07 – COLOMBO/ AIRPORT

Breakfast at the hotel

This is the last day of your tour; Clients proceed to the Colombo International Airport from where you can board the flight for your onward destination..

(Approximately 1 hrs journey (40 km) from Colombo to Airport)

-----End of tour-----

Hotel Used : 03 Star

<u>Location</u>	<u>Hotels</u>	<u>Nights</u>
Sigiriya	Fresco Water Villa	03 Nights
Kandy	Oak ray Serene Garden	01 Night
Bentota	Joes Bentota	01 Night
Colombo	Global Towers	01 Night

Rates : Sharing TWIN / DBL room

02 pax	USD 488 /- Per Person
04 pax	USD 424 /- Per Person
06 pax	USD 401 /- Per Person
08 pax	USD 386 /- Per Person

Hotel Used : 04 Star

<u>Location</u>	<u>Hotels</u>	<u>Nights</u>
Sigiriya	Amaya Lake	03 Nights
Kandy	Amaya Hills	01 Night
Bentota	The Palms	01 Night
Colombo	Zmax Fairway	01 Night

Rates : Sharing TWIN / DBL room

02 pax	USD 518 /- Per Person
04 pax	USD 454 /- Per Person
06 pax	USD 431 /- Per Person
08 pax	USD 416 /- Per Person

Hotel Used : 05 Star

<u>Location</u>	<u>Hotels</u>	<u>Nights</u>
Sigiriya	Cinnamon Lodge	03 Nights
Kandy	Cinnamon Citadel	01 Night
Bentota	Cinnamon Bey	01 Night
Colombo	Movenpick	01 Night

Rates : Sharing TWIN / DBL room

02 pax	USD 548 /- Per Person
04 pax	USD 485 /- Per Person
06 pax	USD 462 /- Per Person
08 pax	USD 447 /- Per Person

The above rates are valid for fully vaccinated clients with both doses, 14 days prior to arrival to Sri Lanka

*** The above rates are valid upto 20th December 2021 and from 10th January to 30th March 2022**

Entrance Fees Supplements: (not added to the cost & subject to change)

✓ Pinnawala Elephant Orphanage	-	USD 15 Per Person
✓ Polonnaruwa city tour	-	USD 25 per person
✓ Minneriya National park	-	USD 40 per person (entrance + jeep)
✓ Polonnaruwa city tour	-	USD 25 per person
✓ Sigiriya Rock Fortress	-	USD 30 per person
✓ Kandy Temple	-	USD 10 Per Person
✓ Peradeniya Botanical Garden	-	USD 11 Per Person
✓ Gregory Lake Entrance	-	USD 02 Per Person

Tour Price Inclusive of

- Accommodation in shared TWIN / DBL standard rooms with private bathrooms
- Meals are as stated in the program inclusive of H/B basis
- Transfers and tours in air-conditioned vehicles.
- Services of English-speaking chauffeur
- Meeting and Greeting at Airport

Additional Notes

- In case the clients want an additional PCR to be done before the departure, there will be an additional charge of USD 40 per person & the transfer charges from the hospital to the hotel will also be extra)

Tour Price Excludes

- International airfare to / from Sri Lanka (quoted separately, if requested)
- Visas USD 30 p.p (or eta.gov.lk)
- Lunch
- Entrance Fees
- Covid 19 insurance USD 12 p.p
- PCR test USD 40 p.p
- Optional tours
- Personal expenditure, such as drinks, souvenirs, laundry, camera fees, communications, postage, gratuities etc.
- Compulsory gala dinners during festive seasons and peak season surcharges which will be advised at the time of booking.
- Early check-in and late check-out at hotels, if not mentioned in the program
- Bank charges for T/T (USD 30) or C/C (3.6%)

PLEASE NOTE:

- ROOMS WILL BE PROVIDED ON AVAILABILITY AT THE TIME OF CONFIRMATION.
- IF ABOVE MENTIONED HOTELS ARE NOT AVAILABLE AT THE TIME OF CONFIRMATION A SIMILAR CATEGORY HOTEL WILL BE PROVIDED FROM THE SAME AREA WITH PRIOR NOTIFICATIONS.
- ALL RATES ARE IN US\$ & SUBJECT TO CHANGE IF CHANGES APPLY FROM HOTEL
- Check in 14.00 hrs and check out 11.00 hrs from hotels
- The consumption of alcohol during “Poya Days and religious holidays” at bars, clubs and other public areas of the hotel and operation of similar forms of entertainment establishments is prohibited by law in Sri Lanka. It is recommended that clients contact the reception to obtain their respective formalities during their holiday.
- Please note that the transfer duration if mentioned is an approximate only. Transfer durations are subject to change due to weather, traffic, road conditions, according to the chosen route, or issues beyond our control.
- Management will not be responsible for any belongings that are lost or stolen or damaged during the tour.
- The guests should carry their passports and covid vaccination cards with them at all times.